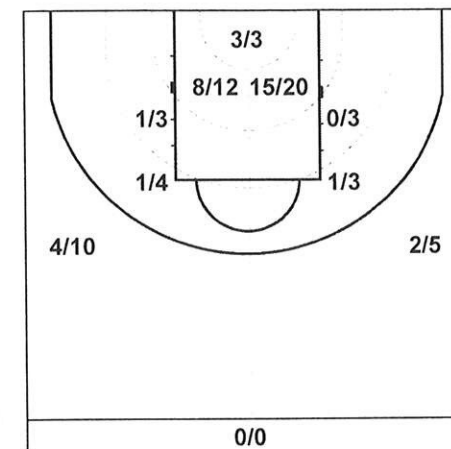


			1	2	3	4	OT
H	KK Cibona Zagreb	90	17	19	28	26	0
V	Cholet Basket	95	21	26	22	26	0

ARENA: BASKETBALL CENTER DRAZEN PETROVIC
 DATE: 20.11.2012. TIME: 18:30 PLAYED: 40:00
 ATTENDANCE: 700

Referees: SHEMMESH, SEFFI [ISR], KRAUSE, OLIVER [GER], ZASHCHUK, SERGIY [UKR]

KK Cibona Zagreb	Min	Pts	2-Pointers			3-Pointers			Free Throws			Rebounds			Fouls		Blocks		RKG	+ / -		
			M	A	%	M	A	%	M	A	%	D	O	T	CM	DR	ST	TO			AS	F
5 KUS, DAVOR	29:15	24	2	5	40	4	4	100	8	8	100				3	5	1	2	6		28	-4
7 ZUBCIC, TOMISLAV (*)	26:38	14	5	7	71	1	4	25	1	1	100	2	4	6	3	1	1	1	4		18	+5
8 MASIC, ANTE	04:27	3	1	1	100				1	1	100				2	1		1			1	-2
9 CARTER, DEMOND (*)	13:57	4	2	5	40	0	2	0							1	1		1		2	-7	
12 MARCINKOVIC, PAVLE (*)	25:42	4	2	2	100							3		3	5	1	2	1	1	1	6	
20 ROZIC, MARIN	13:54					0	1	0				3	1	4	2		1	1			3	-5
21 JAGODIK, MARKO	10:26	2	1	2	50										2	1		1	1			-10
24 STRAWBERRY, DARRYL (*)	28:56	10	2	4	50	2	4	50				4		4	4	2	1	4	1		6	-3
31 ZIZIC, ANDRIJA (*)	31:24	24	11	17	65				2	2	100	4	3	7	3	2	1	3	1		23	+7
41 HAMILTON, JUSTIN	06:56	3	1	2	50				1	2	50				1	1					1	-10
55 KOVACEVIC, HRVOJE	08:25	2	1	2	50	0	1	0							2			1			-1	+4
TEAM	--:--																			1		-1



TEAM COMPARISON	Min	Pts	2-Pointers			3-Pointers			Free Throws			Rebounds			Fouls		Blocks		RKG	+ / -		
			M	A	%	M	A	%	M	A	%	D	O	T	CM	DR	ST	TO			AS	F
KK Cibona Zagreb	200:00	90	28	47	60	7	16	44	13	14	93	16	8	24	27	15	8	13	17	1	0	86
Cholet Basket	200:00	95	22	36	61	11	21	52	18	24	75	20	9	29	15	27	6	14	22	0	1	119

STARTERS	Pts	Pts %	Rbs	Rbs %	Min %
KK Cibona Zagreb	56	62	20	83	63
Cholet Basket	61	64	21	72	70

Cholet Basket	Min	Pts	2-Pointers			3-Pointers			Free Throws			Rebounds			Fouls		Blocks		RKG	+ / -			
			M	A	%	M	A	%	M	A	%	D	O	T	CM	DR	ST	TO			AS	F	AG
6 JOMBY, RUDY (*)	23:20	8				2	6	33	2	2	100	3		3	2	1		2	2		6	+4	
8 SLAUGHTER, A.J.	28:11	18	4	8	50	2	4	50	4	5	80	4	1	5	2	9	2		6		31	+7	
11 EVERETT, TERRELL (*)	34:16	9	3	7	43	1	2	50	0	2	0			3	3	2	3	1	3	11		15	+2
12 MORIN, YANNIS	--:--																						
14 FAROUX, CLEMENT	--:--																						
16 ONA EMBO, CARL	08:46					0	1	0							2							-3	
17 GOREE, MARCUS (*)	37:51	20	7	8	88	1	2	50	3	5	60	6	1	7		7	2	2	3		33	+6	
18 BRYANT, TRAVON (*)	30:45	19	6	9	67	1	1	100	4	4	100	4	3	7	4	2		5			16	-2	
19 SOUCHU, KARIM (*)	15:28	5	1	2	50	1	1	100				1		1	1			1			3	+3	
20 OBASOHAN, DERRICK	21:23	16	1	2	50	3	4	75	5	6	83	1		1	2	5	1	1		1	16	+5	
TEAM	--:--											1	1	2							2		

